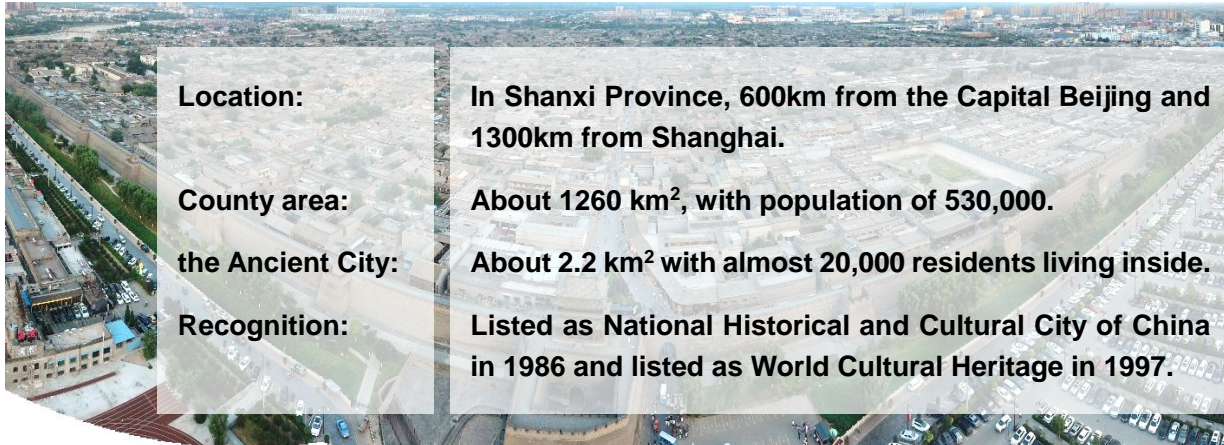


Practical Info of Pingyao

Before you start your trip, please have a quick glance at this file. This package is all the practical information about Pingyao and China including the city's history, weather forecast, Clothing, computers & Internet, plugs, currency and food recommendation.



1 Pingyao Introduction



Pingyao Ancient City

It is a well-preserved ancient county-level city in China with about 2700 years of history. Ping Yao is an exceptionally well-preserved example of a traditional Han Chinese city. Its urban fabric reveals the evolution of architectural styles and town-planning in Imperial China over five centuries. Of special interest are the imposing buildings associated with banking, for which Ping Yao was the major center for the whole of China in the 19th and early 20th centuries.

Pingyao Traditional Dwellings

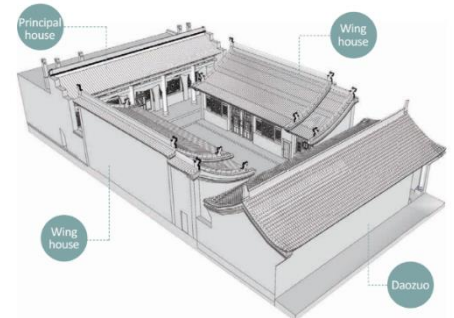
Most Pingyao traditional courtyards are narrow si-he-yuan style (quadrangle), characterized by a clear axis, symmetrical layout and a distinct hierarchical order. Some residences comprise two or three entrance gates along the axis, arranged in the shape of the Chinese character “日 (ri)” or “目 (mu)”. The courtyards are separated by low walls with floral-pendant gates.

Each courtyard may be enclosed by principal house, wing house, dao-zuo and walls. The layout and the relationship with their users reflect the Confucian concepts and traditional Chinese ceremonial protocols.

In general, the principal house (usually facing south) has a yaodong structure, which literally means cave dwellings as a unique style of residential architecture on the Loess Plateau, with three or five rooms, and is usually built in the form of one ‘open (public)’ room and two ‘hidden (private)’ rooms. While it also usually has a wooden gallery in the front and a flat roof. The wing house and dao-zuo are of masonry-wood structure and have a single-slope or double-slope tiled roof.

Generally, the entrance gate is located at the southeast corner of the yard and the dry latrine at the southwest corner.

Brick, timber, earth and tile are the most common materials in Pingyao traditional dwellings.



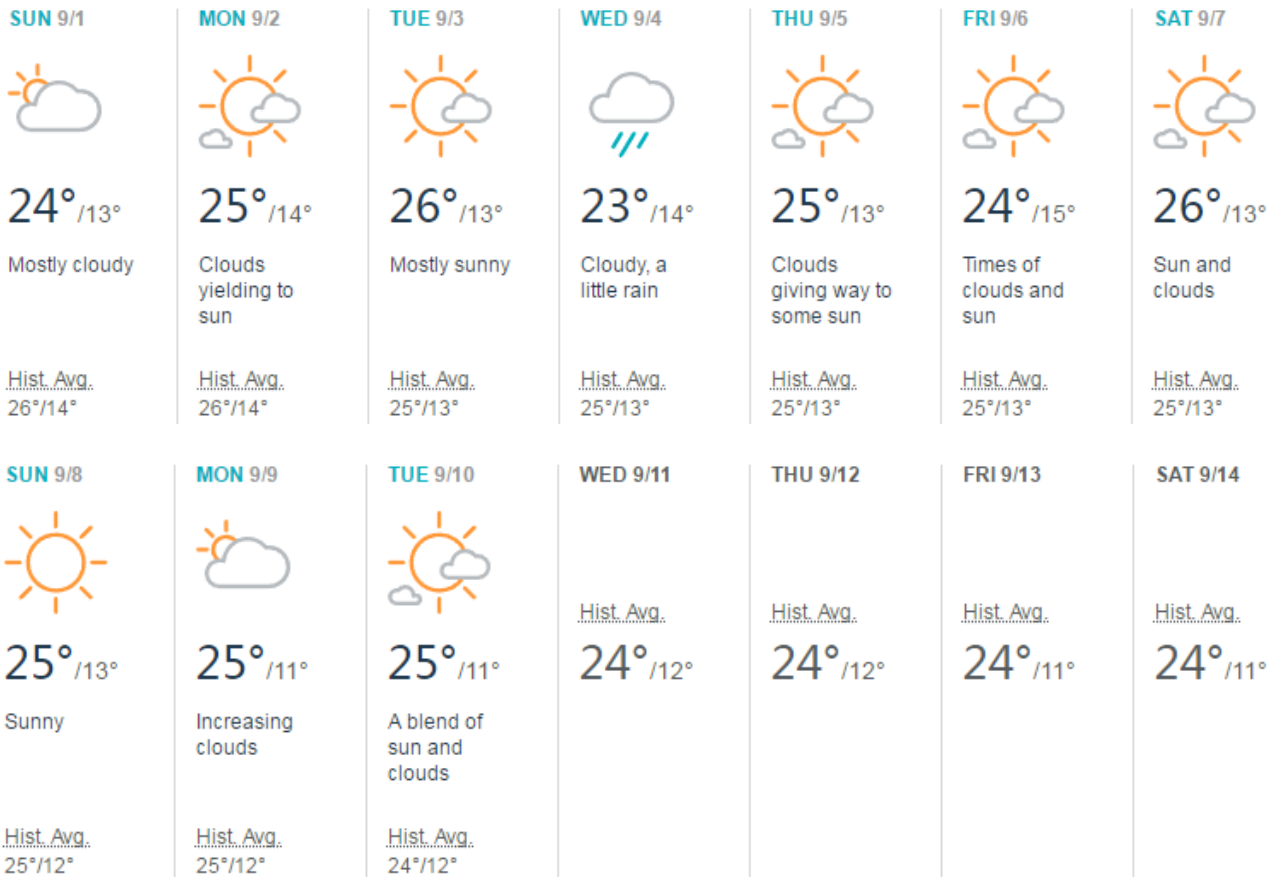
2 Weather Forecast

Pingyao has a continental climate with four distinct seasons. It's usually windy with not much rain in spring and winter, while sunny but rainy in summer and autumn.

According to the weather forecast between August 23 and September 5, the maximum temperature should not exceed 30°C, and the lowest is about 13°C. It will be rainy in some days.

The temperature differs greatly between day and night, please remember to bring some thick clothes to keep warm.

Please check again before your departure, for possible changes.



Source: <https://www.accuweather.com/en/cn/pingyao-ounty/60835/month/60835?monyr=8/01/2019>

Consulted on June 13, 2019.

3 Clothing & Shoes



Your clothing should be light enough to keep you cool while working in the hot sunshine. A hat and sunglasses will also help. Please remember to bring some warm clothes for the cool nights/mornings and for unpredictable rain showers.

4 Computers & Internet

There will be an internet connection available in most hotels and public buildings. Our recommended hotel and the conference hall will have the Wifi and Internet access.

5 Plug

In Mainland China, the common power voltage is 220 Volt 50 Hz. So you need to use the Chinese standard plug in Pingyao, because the shape and voltage may be quite different from other countries. Please prepare the conversion plug in advance.

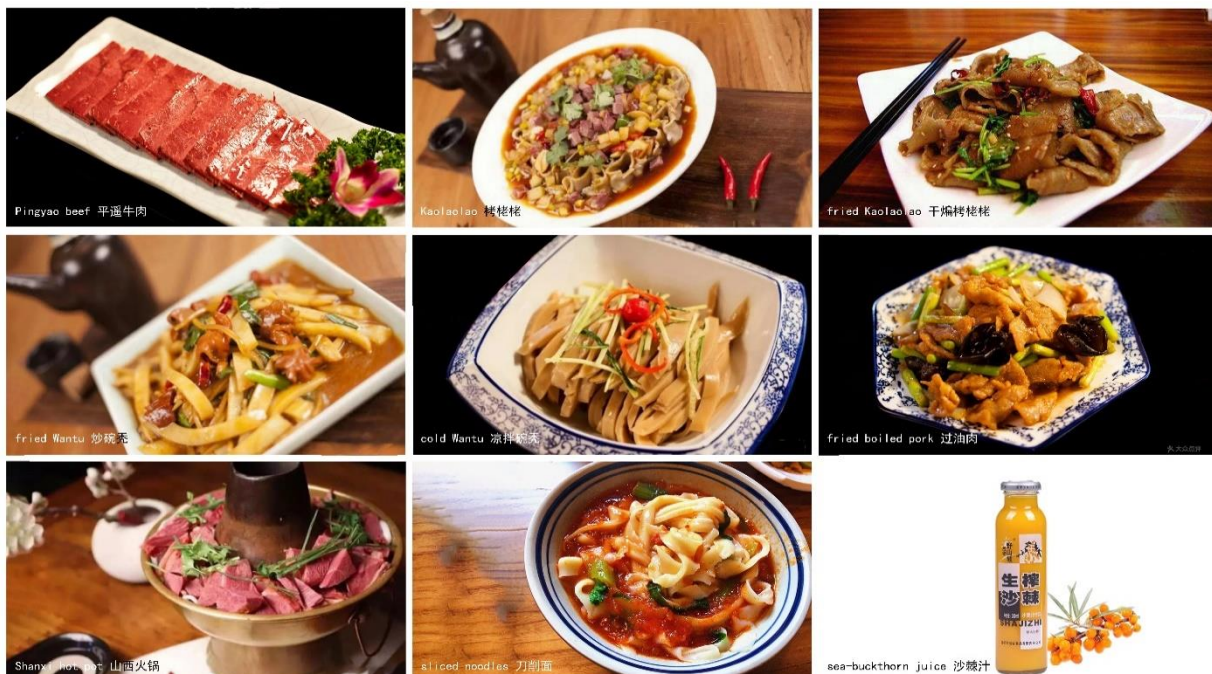
<p>Type A</p>  <p>⚡ 220V</p>	<p>In China, this kind of outlets has two holes of the same shape and size. Plugs that match this socket are commonly used in US, Mexico, Canada, Japan, Philippines, Colombia, Thailand, Vietnam, Panama... But you should notice that there is a kind of two-blade plug with one end larger than the other. They can't be used in China without an adaptor.</p>
<p>Type I</p>  <p>⚡ 220V</p>	<p>Countries like Australia, New Zealand, Argentina, and Fiji use electronic devices of this plug shape. Sometimes, the blade at the top is missed, but it can still function safely in Mainland China.</p>

Chinese Standard Socket

6 Local Food

The most famous food in Pingyao is Pingyao beef (平遥牛肉), and some others are usually made of flour like most of Shanxi Province.

There are many local restaurants on the main commercial streets in Pingyao Ancient City. More specifically, the local food include Pingyao beef (平遥牛肉), Kaolaolao (made of oat flour; 栲栳糕), fried boiled pork (过油肉), Wantu (made of soba; 碗秃), Shanxi hot pot (山西火锅) and various noodles, etc. There is also a special local drink called sea-buckthorn juice (沙棘汁) which you can find in most shops here.



If you have any dietary restrictions (allergies, vegetarian, etc.), please notify the restaurant owner before ordering and ask for their recommendation.

7 Currency

The local currency is the Chinese Yuan (CNY), which is currently exchanged with the USD or Euro at approximately a rate of:

1 USD = 6.8930 CNY

1 Euro = 7.8147 CNY

Source: <http://www.chinamoney.com.cn/english/> Consulted on June 11, 2019.